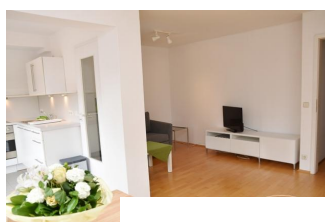
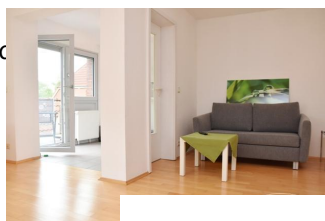


## Kirchrode, beautiful apartment between Tiergarten and Eilenriede

See description for usage-based costs				
short-term rental apartment	Rent 900,00 EUR per Month	Living space ca. 62,00 qm	Number of rooms 2,0	Available from 23.04.2024

### Other dates

District	Kirchrode-Bemerode-Wülferode
Floor	1.Floor
Available until	Open-ended
Minimum rental length	360 days
Maximum number of tenants	1
Smoking / Nonsmoker	Non-smokers only
Balcony	yes
Elevator	No
Garden	No



### Facilities

- balcony terrace
- DSL WLAN
- cable TV
- shower
- washing machine
- TV
- fitted kitchen
- **bathroom**
- with shower
- **flooring material**
- parquet
- **kitchen**
- fitted kitchen
- **technics**
- Wifi reception
- couch sleeping couch
- internet
- open kitchen
- single bed
- table desk
- phone jack
- parquet flooring
- with washing machine

### References

Please read our Notes on currency conversion under <http://www.homecompany.de/en/currency-info>

### Website synopsis

<http://hannover.homecompany.de/en/object/AG779604>

### Description

Bright, friendly apartment with sloping ceilings in the extension of a detached house. Private entrance, looks like a house of its own. Very quiet location in dead end. Entrance area on ground floor with cloakroom, storage space. Stairs up to

Living room with sofa bed, armchair, lowboard with cable TV, dining table with 4 chairs, parquet.

Open fitted kitchen, fully equipped, access to Roof terrace.

Bedroom with bed 120x200 cm, wardrobe, chest of drawers.

Shower room / WC with washing machine.

-----

German radio and television fee not included.

The final cleaning fee will be charged at cost.

The rent includes the operating costs as well as the average energy consumption for 1 person.

Only for non smokers!

Virtual apartment viewing with 360° panoramic views:  
<https://tour.feelestate.com/view/fullscreen/id/VZ8HP>