

Wunstorf, O.T. Luthe, apartment with functional equipment

See description for usage-based costs				
short-term rental apartment	Rent 660,00 EUR per Month	Living space ca. 70,00 qm	Number of rooms 2,0	Available from 27.04.2024

Other dates

District	Luthe
Floor	2.Floor
Available until	Open-ended
Minimum rental length	30 days
Maximum number of tenants	2
Smoking / Nonsmoker	Not Applicable
Balcony	yes
Elevator	No
Garden	No



Facilities

- | | |
|-------------------|------------------|
| - double bed | - shower |
| - fitted kitchen | - single bed |
| - dish washer | - phone jack |
| - table desk | - TV |
| - bath tub | - parking space |
| - balcony terrace | |
| - bathroom | |
| - with shower | |
| - kitchen | |
| - with dishwasher | - fitted kitchen |

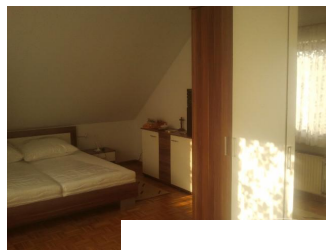


References

Please read our Notes on currency conversion under <http://www.homecompany.de/en/currency-info>

Website synopsis

<http://hannover.homecompany.de/en/object/AG772697>



Description

Basic flat, also for workers.
 Weekly commuters only!
 Sitting room with seat set, TV,
 Bedroom with double bed and single bed, night cupboards, 2 wardrobes.
 Fitted kitchen with cooker with oven, dishwasher, kompl. equipped.
 Shower and bath / WC.
 Hall.
 German radio - and TV-fees are not included.
 Final cleaning fee on time and material basis.
 The rent includes the utilities as well as the average energy consumption for 1 person. 2 persons on request, incl. passenger car parking lot.

Print out 27.04.2024